

REVISION WORKSHEET

1. plants that can prepare their own food are called

- a) Heterotrophs
- b) Autotrophs
- c) parasites
- d) Saprophytes

2 The gas that produced during photosynthesis

- a) oxygen
- b) carbon dioxide
- c) Hydrogen
- d) Nitrogen

3. Which is not digested by human?

- a) Proteins
- b) Fats
- c) Cellulose
- d) Glucose

4 The innermost part of a tooth is the

- a. dentine,
- b. enamel
- c. pulp
- d. gum

5. The process of chewing food is known as

- a. peristalsis
- b. mastication
- c. digestion
- d. nutrition

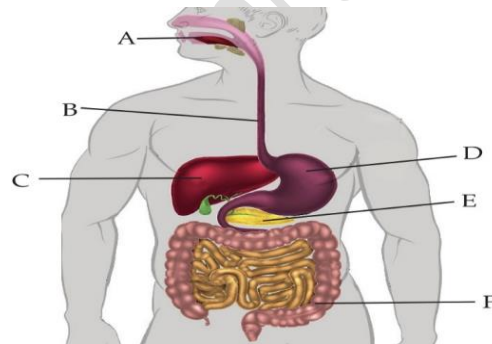
6. The dentine is the hardest part of the body (true/false).....

7. plants need nitrogen to make protein (true/false).....

8. Digestion of proteins begins in the.....

- 9.....green substance found in autotrophs
- 10.....are surrounded by guard cells that control their opening and closing
- 11.Digestion of protein begins in the
- 12.In humans theare teeth used to bite and cut the food
- 13 Identify the parts marked A,B,C,D,E,F Below in the human digestive system

- A.....
- B.....
- C.....
- D.....
- E.....
- F.....



14.Name the four Stomachs in Cattle

15.Briefly Explain the structure and functions of the different kinds of teeth in humans